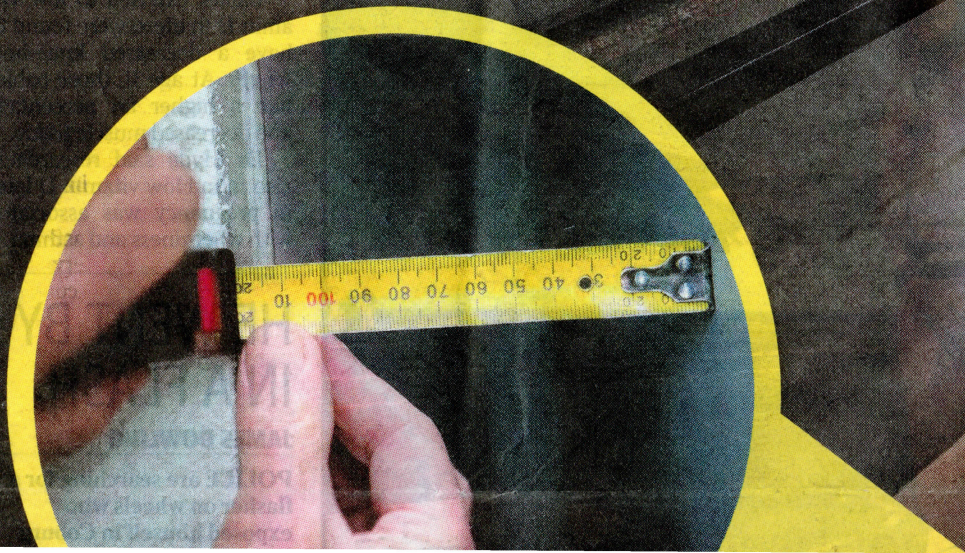


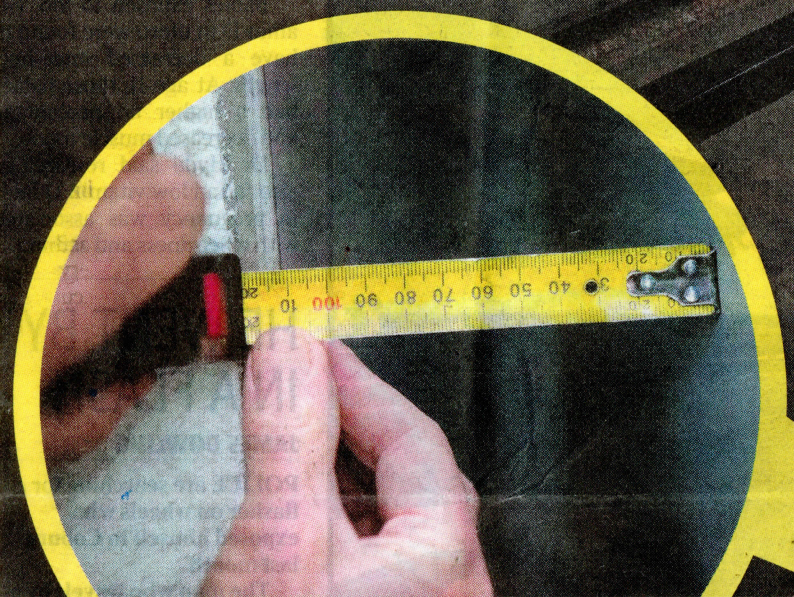
# A VIEW TO CRY FOR



Richard Hallam shows how boxed in he has become by the new building next door. Pictures: MARK STEWART



Richard Hallam shows how boxed in he has become by the new building next door. Pictures: MARK STEWART



## Balcony blocked by highrise

THESE are the pictures that highlight Melbourne's high-rise housing squeeze.

A looming concrete development in South Yarra is separated by 11.5cm from the north-facing balconies of the apartment block next door.

Construction of the 24-storey student accommodation building in Claremont St has left residents in the apartments next door "gob-smacked" at the encroachment on their view and source of sunlight.

Neighbours said they knew the tower was going up but had no idea they would be boxed in at such close range.

Apartment owner Richard Hallam said it was only when the building started to take shape in recent weeks he realised he would be staring straight at a concrete wall.

### JOSH FAGAN

"Initially I wasn't concerned then I saw the first few floors go up and I thought, 'That's it I'm sandwiched in.' I was just gobsmacked seeing it right in my face," he said.

Another neighbour Dave, who asked for his surname not to be used, said he and his girlfriend were moving out because of the impact of the development. He said they were renting on the 14th floor and their enviable views across the city were being "entirely blocked out".

"It's terrible. I'd be p---d off if I'd bought here," he said.

"We're making sure we're not still here when it reaches up to our floor."

Mr Hallam bought his two-bedroom flat on the sixth floor last year and said part of the

appeal of moving there was the light-filled lounge room.

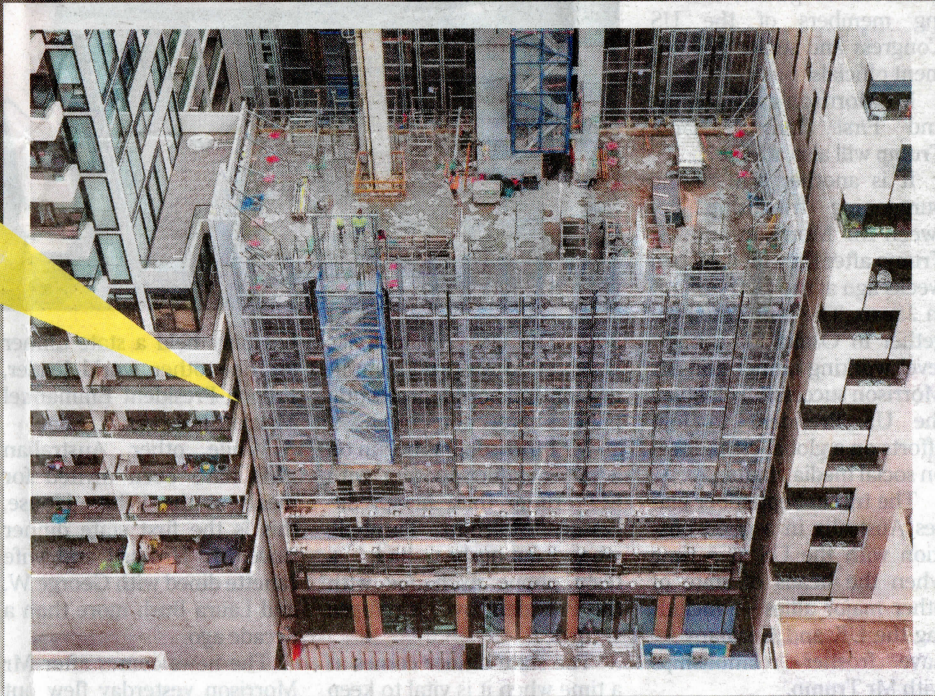
"I used to get a fantastic view and the sun coming in, now there's a bleeding great wall blocking it. It's mad. It's a complete eyesore," he said.

The offending wall is part of the Igloo student accommodation that was expected to be 74.4m tall with 448 apartments when completed.

Nearby resident Donna Aston has been charting the progress of the build from her balcony and said she was staggered to see it so close to the site next door. "Their views are just being obliterated," she said. "It's insanity."

The *Herald Sun* contacted Stonnington Council, which gave approval for the development, but it did not respond before deadline.

[josh.fagan@news.com.au](mailto:josh.fagan@news.com.au)



## NEIGHBOURS FROM HELL FACING EVICTION

TENANTS causing mayhem in a new apartment complex are understood to be facing the boot.

About half a dozen public housing tenants in the private 79-unit complex in Melbourne's east are being blamed for late-night fights, suspected drug dealing and

### WES HOSKING

people passed out in the hallway.

The *Herald Sun* has been told authorities are now considering moving tenants at two units in the complex.

Another was understood to be under close watch.

Police were also ramping up patrols.

"It's outrageous. The government has an obligation to ensure the people they are providing accommodation to ... are abiding by the law," Opposition housing spokesman Tim Smith said.